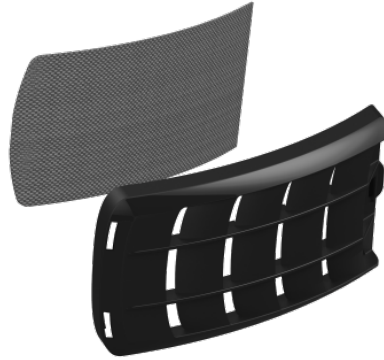


# TECHNICAL SPECIFICATION



## Replacement Powercap® Infinity® Pre-Filters with covers

Pack of 5 Pairs with a Pair of Covers / CEU100-006-500



### DESCRIPTION

Pre-filters and pre-filter covers for PowerCap® Infinity®. It is recommended that pre-filters are changed daily before use.

Only use genuine PowerCap® Infinity® filters supplied in pairs from JSP or its distributors. Always replace both filters simultaneously. NEVER use compressed air on the filters, as it will seriously limit protection.

### OPTIONS

**Pack of 5 Pairs with a Pair of Covers (CEU100-006-500)**



JSP Limited, Worsham Mill, Minster Lovell, Oxford OX29 0TA, England.

Tel: +44 (0)1993 826050 / Fax: +44 (0)1993 824411 / Email: sales@jsp-safety.com / Web: www.jsp-safety.com

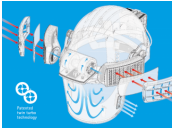
Do Not Publish without written permission from JSP Limited. Contact copyright@jsp-safety.com. Information correct in the United Kingdom at date of issue and may be subject to change. Any third-party machine and automated translations processed by users may have inaccuracies and should not be relied upon.

Page 1 of 3 / Issued 7 Oct 2024 / Copyright 2018 - 2024, JSP Limited. All Rights Reserved.



Spare  
Pre FiltersProduct Weight  
34g

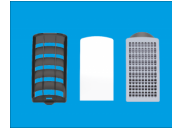
## FEATURES

**Powerful Twin Turbo Performance**

The patented Twin Turbo Technology controls the airflow through the headtop to maximise user comfort and optimise energy efficiency. Real time diagnostics ensure that the twin impeller motor unit delivers the optimum level of airflow depending on the wearer's demands and regulates the intake and internal pressure delivering a minimum of 160 litres a minute of filtered clean air.

**No need to FACE FIT test**

PowerCap® Infinity® removes the need for fit testing, ensuring that a high volume of clean air is delivered to the breathing zone giving a high level of protection.

**TH3 Performance**

PowerCap® Infinity® offers respiratory protection to TH3, with a Nominal Protection Factor of 500 (UK APF 40). TH3 is the highest possible rating in the EN12941:1998 + A2:2008 standard.

**Smart PPE**

Real time diagnostics monitor the system and the wearer twice per second, giving the user accurate, dynamic feedback. Periods of high respiratory demand are monitored and catered for by constantly maintaining a positive pressure inside the respirator. Feedback is given on battery and filter condition via the heads up display and audible notifications.

**Head Protection**

PowerCap® Infinity® is built around the super strong ABS shell of the EVO®5 Olympus® industrial safety helmet. Fitted with the Revolution® Flex wheel ratchet harness, the helmet is designed to reduce pressure for the perfect fit and all-day comfort.

**Panaromic Impact Visor**

The optical class 1 visor conforms to EN166.B offering impact protection at speeds of up to 270 mph (tested using a 6mm steel ball bearing). The visor has a replaceable peel-off visor protector to prolong its life.

**Tested to the MAX**

Hundreds of hours of human treadmill tests were conducted in a purpose built salt dust challenge chamber to optimise mass, balance and sealing elements. Extensive user trials were conducted, putting the PowerCap® Infinity® to the test in a variety of harsh conditions.

**High Efficiency Filters**

The high capacity HEPA filters coupled with the aerodynamically optimised pre-filter covers ensure that PowerCap® Infinity® delivers 160 litres per minute of clean air to the user with maximum battery efficiency. Filters can be effortlessly replaced using an intuitive quick-change bayonet system.

**Ear Defenders**

The PowerCap® Infinity® has been developed to seamlessly integrate with the optional Sonis® helmet mounted ear defenders. Designed by the JSP R&D team and working with a leading UK acoustic engineering research facility, the Sonis® helmet mounted range peaks at an unbeaten SNR 36dB. The helmet adaptor and the cushion surface area work together to provide optimum cushion pressure and comfort.

**Minimal Maintenance**

PowerCap® Infinity® has been developed as a modular system, making it easy to disassemble and reassemble for ease of cleaning and maintenance. To ensure the optimal performance of PowerCap® Infinity® it is important that maintenance is carried out on a regular basis. No specialist tools required.

**Perfect Fit to Combat Dust**

Dust in the workplace is a significant issue. The latest HSE figures (2017) show that 18,000 new cases of work-related respiratory disease were diagnosed. A significant proportion of these were the result of exposure to silica. While the problem is widely acknowledged and use of respiratory equipment is high, it is often not suitable for the person or the environment it is being used in.

JSP Limited, Worsham Mill, Minster Lovell, Oxford OX29 0TA, England.

Tel: +44 (0)1993 826050 / Fax: +44 (0)1993 824411 / Email: sales@jspsafety.com / Web: www.jspsafety.com

Do Not Publish without written permission from JSP Limited. Contact copyright@jspsafety.com. Information correct in the United Kingdom at date of issue and may be subject to change. Any third-party machine and automated translations processed by users may have inaccuracies and should not be relied upon.

Page 2 of 3 / Issued 7 Oct 2024 / Copyright 2018 - 2024. JSP Limited. All Rights Reserved.




## RANGE

## VIDEOS



- [▶ youtu.be/jS1Fr-xVS1I](https://youtu.be/jS1Fr-xVS1I)
- [▶ youtu.be/IMJIVCKiTdo](https://youtu.be/IMJIVCKiTdo)
- [▶ youtu.be/u7dUKX-\\_vAc](https://youtu.be/u7dUKX-_vAc)

## DOWNLOADS

-  [Image Pack \(ZIP\)](#)
-  [doc-powercap\\_infinity.pdf \(PDF\)](#)



JSP Limited, Worsham Mill, Minster Lovell, Oxford OX29 0TA, England.

Tel: +44 (0)1993 826050 / Fax: +44 (0)1993 824411 / Email: [sales@jspsafety.com](mailto:sales@jspsafety.com) / Web: [www.jspsafety.com](http://www.jspsafety.com)

Do Not Publish without written permission from JSP Limited. Contact [copyright@jspsafety.com](mailto:copyright@jspsafety.com). Information correct in the United Kingdom at date of issue and may be subject to change. Any third-party machine and automated translations processed by users may have inaccuracies and should not be relied upon.

Page 3 of 3 / Issued 7 Oct 2024 / Copyright 2018 - 2024, JSP Limited. All Rights Reserved.

