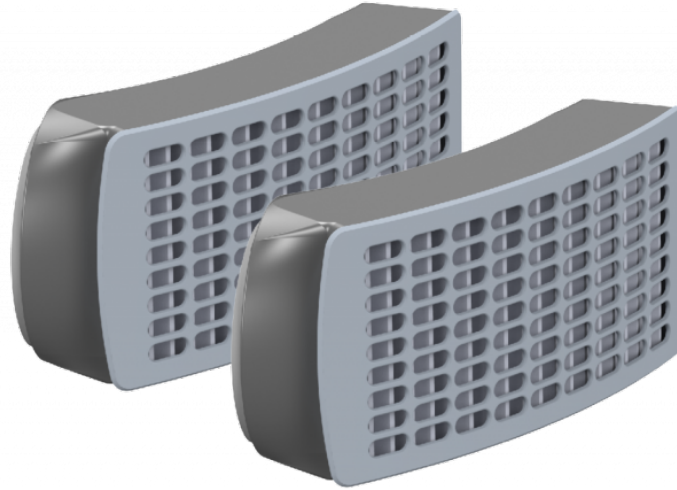


# TECHNICAL SPECIFICATION



## Replacement Powercap® Infinity® Filters

2 Pack / CAU660-000-400



### DESCRIPTION

Pair of replacement filters for PowerCap® Infinity®. Filters should be checked, maintained and replaced regularly to ensure the unit performs correctly. The length of a filters life depends on working application.

#### About the filters

These filters are high efficiency particulate types supplied in pairs. They will filter most particulate matter such as dust, spores, mist and fumes.

They will not filter gases, vapours or toxic substances

\*Replacement PowerCap® Infinity® filters meet the requirements of EN 12941 when fitted to PowerCap® Infinity® respirator.

### OPTIONS

**2 Pack (CAU660-000-400)**

### SAFETY STANDARDS

EN 12941



JSP Limited, Worsham Mill, Minster Lovell, Oxford OX29 0TA, England.

Tel: +44 (0)1993 826050 / Fax: +44 (0)1993 824411 / Email: sales@jgpsafety.com / Web: www.jgpsafety.com

Do Not Publish without written permission from JSP Limited. Contact copyright@jgpsafety.com. Information correct in the United Kingdom at date of issue and may be subject to change. Any third-party machine and automated translations processed by users may have inaccuracies and should not be relied upon.

Page 1 of 3 / Issued 7 Oct 2024 / Copyright 2018 - 2024. JSP Limited. All Rights Reserved.



## SPECIFICATIONS

Classification  
TH3 (Turbo Hood)

Usage  
R (Reusable)

Activated Carbon Layer  
No

Maximum Total Inward Leakage (TIL)  
0.2% When Fitted To PowerCap® Infinity®  
Respirator

UK Assigned Protection Factor  
40 - When Fitted to A Powercap® Infinity®  
Respirator

Metal Free  
Yes

Filter Casing Material  
ABS Plastic

BSI Kitemark  
Yes

Filter Type  
P (Protects Against Solid & Liquid Particulate  
Aerosol)

(D) Resistance to dust clogging  
Yes - Mandatory In EN12941

Minimum Filtration Efficiency  
99.8%

Nominal Protection Factor  
500 - When Fitted To Powercap® Infinity®  
Respirator

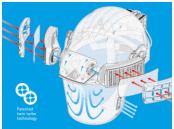
Latex free  
Yes

Filter Material  
Pleated Media

Filter Shelf Life  
5 Years

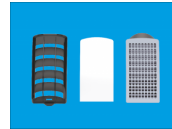
Product Weight  
106g

## FEATURES



### Powerful Twin Turbo Performance

The patented Twin Turbo Technology controls the airflow through the headtop to maximise user comfort and optimise energy efficiency. Real time diagnostics ensure that the twin impeller motor unit delivers the optimum level of airflow depending on the wearer's demands and regulates the intake and internal pressure delivering a minimum of 160 litres a minute of filtered clean air.



### TH3 Performance

PowerCap® Infinity® offers respiratory protection to TH3, with a Nominal Protection Factor of 500 (UK APF 40). TH3 is the highest possible rating in the EN12941:1998 + A2:2008 standard.



### No need to FACE FIT test

PowerCap® Infinity® removes the need for fit testing, ensuring that a high volume of clean air is delivered to the breathing zone giving a high level of protection.



### Smart PPE

Real time diagnostics monitor the system and the wearer twice per second, giving the user accurate, dynamic feedback. Periods of high respiratory demand are monitored and catered for by constantly maintaining a positive pressure inside the respirator. Feedback is given on battery and filter condition via the heads up display and audible notifications.



### Head Protection

PowerCap® Infinity® is built around the super strong ABS shell of the EVO®5 Olympus® industrial safety helmet. Fitted with the Revolution® Flex wheel ratchet harness, the helmet is designed to reduce pressure for the perfect fit and all-day comfort.



### High Efficiency Filters

The high capacity HEPA filters coupled with the aerodynamically optimised pre-filter covers ensure that PowerCap® Infinity® delivers 160 litres per minute of clean air to the user with maximum battery efficiency. Filters can be effortlessly replaced using an intuitive quick-change bayonet system.



### Panoramic Impact Visor

The optical class 1 visor conforms to EN166.B offering impact protection at speeds of up to 270 mph (tested using a 6mm steel ball bearing). The visor has a replaceable peel-off visor protector to

JSP Limited, Worsham Mill, Minster Lovell, Oxford OX29 0TA, England.

Tel: +44 (0)1993 826050 / Fax: +44 (0)1993 824411 / Email: sales@jsp-safety.com / Web: www.jsp-safety.com

Do Not Publish without written permission from JSP Limited. Contact copyright@jsp-safety.com. Information correct in the United Kingdom at date of issue and may be subject to change. Any third-party machine and automated translations processed by users may have inaccuracies and should not be relied upon.

Page 2 of 3 / Issued 7 Oct 2024 / Copyright 2018 - 2024, JSP Limited. All Rights Reserved.



prolong its life.



### Tested to the MAX

Hundreds of hours of human treadmill tests were conducted in a purpose built salt dust challenge chamber to optimise mass, balance and sealing elements. Extensive user trials were conducted, putting the PowerCap® Infinity® to the test in a variety of harsh conditions.



### Minimal Maintenance

PowerCap® Infinity® has been developed as a modular system, making it easy to disassemble and reassemble for ease of cleaning and maintenance. To ensure the optimal performance of PowerCap® Infinity® it is important that maintenance is carried out on a regular basis. No specialist tools required.



### Ear Defenders

The PowerCap® Infinity® has been developed to seamlessly integrate with the optional Sonis® helmet mounted ear defenders. Designed by the JSP R&D team and working with a leading UK acoustic engineering research facility, the Sonis® helmet mounted range peaks at an unbeaten SNR 36dB. The helmet adaptor and the cushion surface area work together to provide optimum cushion pressure and comfort.



### Perfect Fit to Combat Dust

Dust in the workplace is a significant issue. The latest HSE figures (2017) show that 18,000 new cases of work-related respiratory disease were diagnosed. A significant proportion of these were the result of exposure to silica. While the problem is widely acknowledged and use of respiratory equipment is high, it is often not suitable for the person or the environment it is being used in.

## RANGE

## VIDEOS



- [youtu.be/jS1Fr-xVS1I](https://youtu.be/jS1Fr-xVS1I)
- [youtu.be/IMJIVCKiTdo](https://youtu.be/IMJIVCKiTdo)
- [youtu.be/u7dUKX-\\_vAc](https://youtu.be/u7dUKX-_vAc)

## DOWNLOADS

- [Image Pack \(ZIP\)](#)
- [doc-powercap\\_infinity.pdf \(PDF\)](#)



JSP Limited, Worsham Mill, Minster Lovell, Oxford OX29 0TA, England.

Tel: +44 (0)1993 826050 / Fax: +44 (0)1993 824411 / Email: sales@jspsafety.com / Web: www.jspsafety.com

Do Not Publish without written permission from JSP Limited. Contact copyright@jspsafety.com. Information correct in the United Kingdom at date of issue and may be subject to change. Any third-party machine and automated translations processed by users may have inaccuracies and should not be relied upon.

Page 3 of 3 / Issued 7 Oct 2024 / Copyright 2018 - 2024. JSP Limited. All Rights Reserved.

