

# TECHNICAL SPECIFICATION



## Sonis®1 Ear Defenders

Dark Grey / Green / AEB010-0AY-800



### DESCRIPTION

The Sonis® range has been stylishly designed with a traffic light colour code for easy identification. Materials have been chosen for both performance and comfort over extended periods of use, with careful design ensuring a small number of key components for easy maintenance.

Sonis®1 ear defenders offer low attenuation.

### OPTIONS

**Dark Grey / Green (AEB010-0AY-800)**

Extra Visibility Green (AEB010-0B1-B00)

White / Green (AEB010-0A1-R01)

### SAFETY STANDARDS

EN 352-1



JSP Limited, Worsham Mill, Minster Lovell, Oxford OX29 0TA, England.

Tel: +44 (0)1993 826050 / Fax: +44 (0)1993 824411 / Email: sales@jspsafety.com / Web: www.jspsafety.com

Do Not Publish without written permission from JSP Limited. Contact copyright@jspsafety.com. Information correct in the United Kingdom at date of issue and may be subject to change. Any third-party machine and automated translations processed by users may have inaccuracies and should not be relied upon.

Page 1 of 2 / Issued 10 Jan 2023 / Copyright 2018 - 2023. JSP Limited. All Rights Reserved.



## SPECIFICATIONS

 Mounting Headband	 SNR 27 dB
Cup Material ABS	Head Band Material TPE
Adjustable Yes	Hygiene Hygiene Kits
 BSI Kitemark Yes	 JSPCheck Yes
 Recyclable Yes	 Product Weight 213g

## FEATURES



### Performance

The Sonis® range of ear defenders have been designed by the JSP R&D team. Working with a leading UK acoustic engineering research facility, they have developed an ear defender range that peaks at an unbeaten 37 SNR.



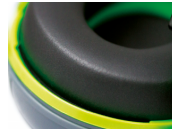
### Customisation

Sonis® cups can be coloured to meet a corporate identity. They can also be printed with a company logo for improved brand recognition and to discourage theft. MOQ's apply.



### Hygienic

The headband is manufactured from TPE, making it easy to wipe clean. The sealing rings are easy to replace. Hygiene kits are available for each model.



### Comfort

The over-moulded headband has a built-in comfort area with ventilation. The headband force and the cushion surface area work together to provide optimum cushion pressure and comfort.



### Adjustable Steel Arms

To facilitate even distribution of pressure the wearer can tilt and adjust the position of the earcup for optimum comfort and fit.



### Extra Visibility option

The Sonis® range is available with extra visibility cups and a reflective head band for added low light protection.



## LOGO

Sides

## RANGE

SONIS 1

## VIDEOS

-  [www.youtube.com/watch?v=kGGYQrlmAGk](https://www.youtube.com/watch?v=kGGYQrlmAGk)
-  [www.youtube.com/watch?v=AycQ2vqifWE](https://www.youtube.com/watch?v=AycQ2vqifWE)

## DOWNLOADS

-  [Image Pack \(ZIP\)](#)
-  [doc-sonis1-over-the-head-ear-muff.pdf \(PDF\)](#)



JSP Limited, Worsham Mill, Minster Lovell, Oxford OX29 0TA, England.

Tel: +44 (0)1993 826050 / Fax: +44 (0)1993 824411 / Email: [sales@jsp-safety.com](mailto:sales@jsp-safety.com) / Web: [www.jsp-safety.com](http://www.jsp-safety.com)

Do Not Publish without written permission from JSP Limited. Contact [copyright@jsp-safety.com](mailto:copyright@jsp-safety.com). Information correct in the United Kingdom at date of issue and may be subject to change. Any third-party machine and automated translations processed by users may have inaccuracies and should not be relied upon.

Page 2 of 2 / Issued 10 Jan 2023 / Copyright 2018 - 2023. JSP Limited. All Rights Reserved.

